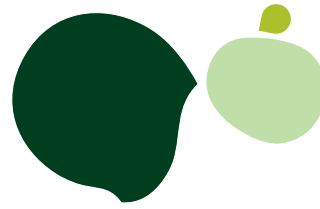


# Sage MAS 90 ERP

## Sage MAS 200 ERP



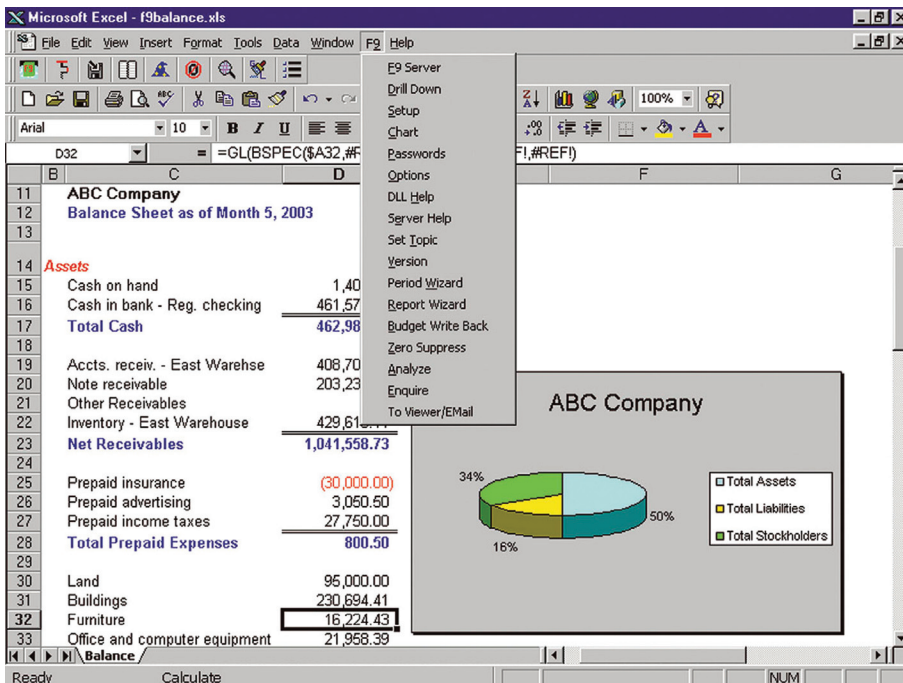
### F9 Report Writer

F9 is a Financial Reporting application, which dynamically links the Sage MAS 90 and Sage MAS 200 ERP General Ledger data to Microsoft® Excel®. By employing a combination of simple cell formulas in Excel, F9 allows General Ledger data in Sage MAS 90 or 200 to be formatted into any desired financial report in the flexible and powerful environment of the spreadsheet. The F9 Report Wizard allows you to go from a blank spreadsheet to a fully formatted, hot-linked report in just seconds! Follow a graphical representation and step-by-step procedure; point and click your way to a finished report, complete with F9 formulas, automatically.

F9 offers an unbeatable feature package, including drill down, multiple date ranges, lists of account segments, and report auditing. It also does all of this while being dynamically hot linked to General Ledger, ensuring that all numbers are timely, consistent, and complete.

#### BENEFITS:

- Get your company's financial status by accessing up-to-the minute general ledger information
- Perform conditional analysis to predict business decision outcomes
- Hotlink your General Ledger data to your spreadsheet and incorporate your edited budgets
- Turn your spreadsheets into an integral part of your Sage MAS 90 or 200 ERP system



"We converted to Sage MAS 200 [with F9] without so much as a hiccup, and suddenly all the data we needed to track sales was right there at our fingertips."

Kurt L. Peterson,  
Vice President of Finance  
Oregon Chai

## Sage MAS 90 and 200 ERP | F9 Report Writer

### Features

|   |   |
|---|---|
| <b>Graphical Presentation of Data</b>                   | The presentation of your financial information can be enhanced by taking advantage of the graphics, text, and add-in capabilities of your spreadsheet.  |
| <b>AnyTimeSlice</b>                                     | You can create financial reports that span any period, even a one-week or one-day Profit and Loss (P&L), if desired.  |
| <b>DataPreLoad</b>                                      | By loading all or part of your chart of accounts into memory, you can speed recalculation times dramatically.   |
| <b>Multicompany Capabilities</b>                        | Access General Ledger data from any number of companies simultaneously. Simplify consolidation across departments, divisions, or companies.   |
| <b>Drill Down</b>                                       | Find the origin of any number in your spreadsheet—drill down all the way to the individual transaction itself. For example, a total revenue figure can be sliced into revenue by department, by product, or by location, and that information can be pasted into your spreadsheet to augment your report. |
| <b>Analyze</b>  | Report out of balance? With just one click, the F9 Analyze feature scans the entire spreadsheet, helping you troubleshoot your report by identifying missing or duplicate accounts.   |
| <b>Multiple Fiscal Years</b>                            | You can access data from all Sage MAS 90 or 200 fiscal years using F9.  |
| <b>Report Wizard</b>                                    | You are guided through report creation step by step; in seconds, you can create a complete financial report with all F9 functions, formulas, and cell references intact.  |
| <b>Flexible Cell Reference</b>                          | Suppose you have created a departmental report with one cell containing the department code "100," for example. Change "100" to "100, 200" and you have a two-department consolidated report. Change "100" to "*" and you have an all-departments report.   |
| <b>Create, Edit, and Write Budgets</b>                  | Read Budget and Write Budget buttons provide a mechanism for passing budgets back and forth between your General Ledger and spreadsheet. Spreadsheets are an optimal environment for creating and editing budgets, and F9 makes it easy.  |
| <b>Executive Information System (EIS) Functionality</b> | With F9, you can drive F9 functionality from within a macro or Visual Basic program. Create dialog boxes, menus, and buttons, and use them to explore your accounting numbers, just as an executive information system would.   |
| <b>General Ledger Function Wizard</b>                   | The General Ledger Function Wizard enhances productivity and the creation of reports. The formula inserts the appropriate number of cells in the spreadsheet to build an F9 report. The General Ledger formula contains the cell references required to complete the report.                              |
| <b>Financial Entities</b>                               | Financial Entities extends the utility of F9 formulas. General Ledger account numbers may be specified, using either the segment value or its description, as they appear in the chart of accounts. You can also define your own F9 Financial Entities.   |
| <b>WGL Formulas</b>                                     | WGL Formulas allow writing budget information back to the F9 Datamart's general ledger. A single cell of information can be written back to the budget files. While Budget Write Back is for batch updates, WGL allows accounts to be updated individually.   |
| <b>Account Enquiry</b>                                  | Just launch F9, select the accounts you want a balance from, and click Get Balance. With Account Enquiry, you can obtain account balances from your General Ledger without using your spreadsheet. Makes queries fast and easy.   |

F9 is a product of Systems Union and is distributed under license by Sage.